

# Installing and Running the RSLogix5000 Motion Database Import Tool

Updated 2011/07/21

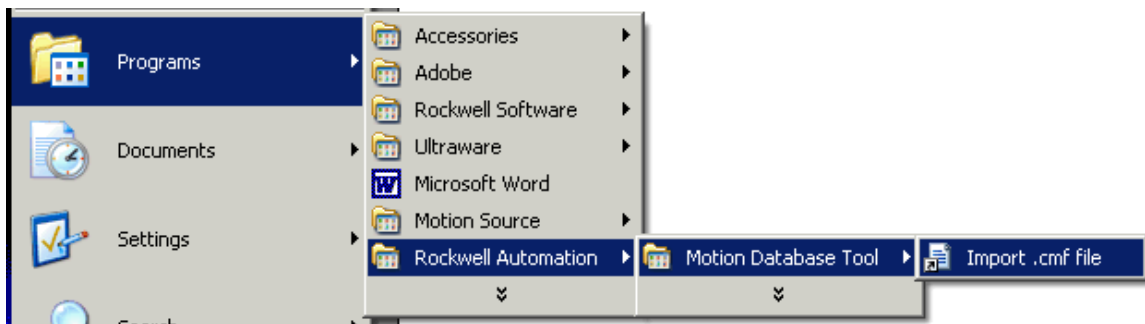
With the release of RSLogix5000 V18, the new .cmf (custom motor file) import tool is required, to import motor files into the various versions of the RSLogix5000 motion database, dating back to V15.

To use this tool, the “Regional and Language Options” on the Personal Computer must be set as described in Note 3 at the bottom of these instructions.

Install the import tool by unzipping the provided zip file, and then extract the 2 files from the zip file to a temporary folder.

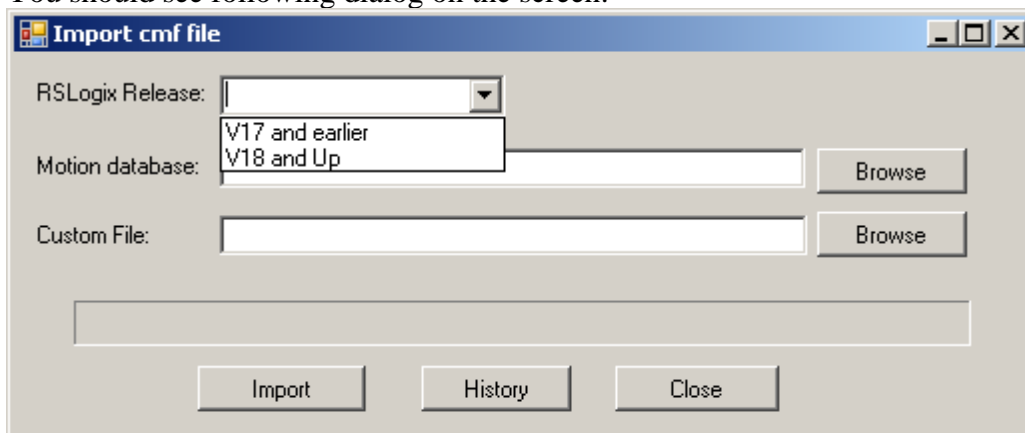
Go to your temporary folder and run the setup.exe file.

When complete, the tool will install in a location similar to the following;



To run the Import .cmf file tool after it has been installed go to Start Menu-> Programs->Rockwell Automation->Motion Database Tools -> Import .cmf file.

You should see following dialog on the screen:



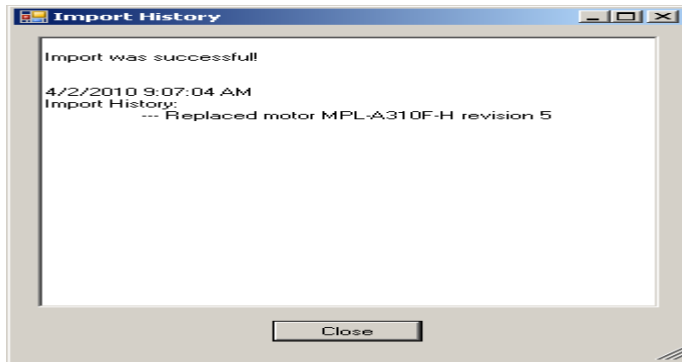
To import into the V18 motion database, select “**V18 and Up**”, then browse for the .cmf file that you want to import.

For “**V17 and earlier**” motion database imports, browse for the Motion Database, then browse for the .cmf file that you want to import.

**NOTE 1** – Certain customers will need to find their current V17 or earlier custom motion database, that contains their running history of special or additional motors that they may have used.

**NOTE 2** – After the import is complete, the customers of existing V17 or earlier motion databases will be automatically assigned a back up name with a date extension. You should consider changing the new motion database name to include the cmf# provided by Rockwell Automation.

When the import is complete, the result dialog will be displayed on the screen.



**NOTE 3 – “Regional and Language Options” settings on the Personal Computer:** After the .cmf import is complete, format errors or erroneous units of measure may be observed, if the Regional and Language Options set on the PC are not set to: Language = English (United States), and Decimal symbol = .

Before installing and using the .cmf import tool, ensure that the PC settings are as follows:

Start Menu-> Settings->Control Panel->Regional and Language Options->

Then set Language:

Languages-> Details-> set to: English (United States).

And set Decimal symbol:

Regional Options-> Customize-> Decimal symbol-> set to: . (period “.”, not “,” comma).

The PC may be returned to its original settings, after the .cmf import is complete.

-end-